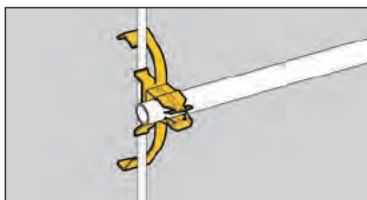


Conduit & cable



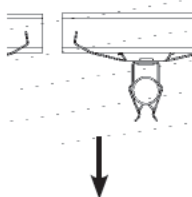
- Assemblies support ½", ¾" and 1" conduit.
- W2 series attaches to ⅛" thru ⅜" flanges or #12 wire thru ¼" plain or threaded rod.
- W6 series attaches to ⅜" thru ⅞" flanges or ⅜" plain or threaded rod.

Push-Type Conduit To Rod Fasteners



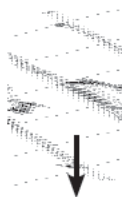
Conduit & Cable

UPC/Part Number	Catalog Number	Conduit Size	Box Qty.
78101119325	BP-8-W2	½" EMT	100
78101119420	BP-12-W2	¾" EMT or ½" IMC. Rigid	100
78101119505	BP-16-W2	1" EMT or ¾" IMC, Rigid	100
78101195521	BP-8-W6	½" EMT	100
78101195522	BP-12-W6	¾" EMT or ½" IMC. Rigid	100
78101195523	BP-16-W6	1" EMT or ¾" IMC, Rigid	100



25 Lbs.

Ultimate Static Load Capacity



15 Lbs.

Note: An independent means of support is required by NEC Article 300.11.